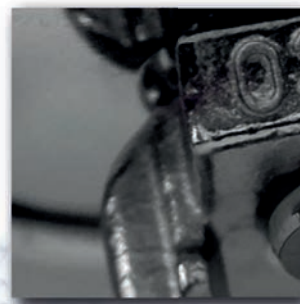
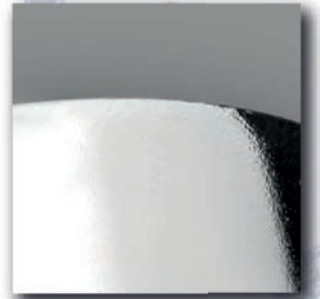


Reliable®

PRODUCT OVERVIEW

Protecting life and property
since 1920 with innovative
approved and listed
automatic sprinklers
and devices.



Reliable Fire Sprinkler Middle East
Manufacturer & Global Distributor
of Fire Protection Products

www.reliablesprinkler.com

Automatic Sprinklers

www.reliablesprinkler.com

Reliable manufacture and distribute a wide range of automatic sprinklers. Their range of sprinklers includes residential, storage, decorative, open sprinklers, nozzles, commercial standard and quick response.

Project Reference

Kingdom of Saudi Arabia

Jeddah New Airport
Third Expansion of the Holy Mosque
Al Jawhara Mall
Four Season Hotel
Amazon Warehouse
Nupco Warehouse
Apple Warehouse
Riyadh Metro
Saudi German Hospital
Tadawul Tower
Schools Infrastructure Projects
Aramco - Al Hassa Project
Aramco - Berri gas plant
Sabic Hadeed Project
Fadhili Power Plant
Jazan IGCC Power block
King Abdulla Project Phase 4
MOI HeadQ
Al Nahdi Warehouse
Samba bank Head Office
Tabuk Power Plant

Egypt

Cairo Airport
Central Business District
The New Administrative Capital Projects
Amazon Warehouse
Parliment Project
Al Alamein City
Azhar Studio
Four Season Sharm El Shiekh
City Stars Pharmacy Azhar University
Fairmount Heliopolis Intercontinental

Jordan

Ritz Carlton Hotel
Saint Regis Hotel
Philip Morris Warehouse
Al-Hikama Pharmaceutical Plant
Aqaba port
Arab Postash
Aladiat Project
Jordan Petroluem Refinery
Ayla Aqaba
Diabetes Centre
Gid Project
Company JTI Manufacturing Jordan
Rehab Power Station

Qatar

Mall of Qatar
GWC Warehouse
Doha New Airport
Milaha Logisti cs city
Porto Arabia
Salwa project
AMC/CUA workshop

Turkey

Istanbul New Airport
Ford R&D Building
Tofas Otomobil
Mercedes Benz
İstinye Park Mall
Rixos Hotel
Dedeman Hotel
HaberTürk Journal
Fox TV
Sarıyer Belediyesi
Glaxosmith
Ağaoğlu My World Europe
Zorlu Center Towers
Batişehir Project
LC Waikiki Güneşli Building
Garanti Bank
Kuveyt Türk Banking
Acıbadem Hospital
Hilton Double Tree Mardin Hilton
Pirelli Cables
IS Bank
Dogus Ayazaga
University Hastanesi
Tarsus American College

Kuwait

Al Salam Palace
Avenues Mall
MEW Power Stations
Sabah Al-Salem University City
Tank Farm at Kuwait Lube Oil
Company 360 degree mall
Hydrotech-DC

United Arab Emirates

Dubai Mall
Dubai Airport
Cleveland Clinic
Amazon Warehouse
Presidential Palace
Nakheel Mall The Palm
St. Regis Beach Resort
Qasr Al Sarab Resort & Spa
The Landmark Tower
YAS Water World
SeaWorld Abu Dhabi
Azur Residence
Mangrove Palace
Capital Gate Tower

SPECIAL

LT56 Series (glass bulb) LT56, LT56-300

K-factor: 5.6 (80)

Temp °C: 68, 93

Thread Size: 1/2" (15mm)

Orientation: pendent, recessed pendent, or conical concealed

These sprinklers utilise a quick response 3mm bulb.



LT56 Series (fusible link) LT56L, LT56L-300, LT56C

K-factor: 5.6 (80)

Temp °C: 74, 100

Thread Size: 1/2" (15mm)

Orientation: pendent, ecessed pendent, or conical concealed. LT56C only available as flat cover plate concealed.

These sprinklers utilise a quick response fusible link.



F1-SS & F1FR-SS Series F1-56SS, F1-80SS, F1FR-56SS, F1FR-80SS

K-factor: 5.6 (80), 8.0 (115)

Temp °C: 57, 68, 79, 93, 141

Thread Size: 1/2" (15mm), 3/4" (20mm)

Orientation: pendent, recessed pendent, upright

Available with polyester finish.



MODEL WP56 Window Sprinkler Quick Response Institutional

K-factor: 5.6 (80)

Temp °C: 68, 74, 93, 100

Thread Size: 1/2" (15mm)

Orientation: VSW

Available with differnt finishes

These sprinklers are available with a quick response fusible link.



NOZZLES

TNL280 Tunnel Spray Nozzle Sprinkler Pendent

K-factor: 28.0 (400)

Threads: 1" NPT or ISO 7-1 R1/2

Distribution criteria for coverage up to 324 sqft (30.25 sqm) per nozzle

Designed primary for use in tunnel fire protection



High Velocity Nozzle HV-HB, HV-H, HV-AS, HV-BS

K-factor: 10 k-factors from 1.26 (18) to 5.4 (78)

Angle: 6 angles from 75° to 120°

Threads: 1" NPT or ISO 7-1 R1

& 3/4" NPT or ISO-7-1 R3/4

With or without blow-off plug . Includes strainer.



Medium Velocity Water Spray Nozzle Model MV

K-factor: 7 k-factors from 1.20 (17) to 7.20 (104)

Angle: 8 angles from 65° to 180°

Threads: 1/2" NPT or ISO 7-1 R1/2

With or without blow-off plug and strainer.



Refer to the website for full product design and information

COMMERCIAL

F1FR Series

F1FR56, F1FR56LL, F1FR42, F1FR42LL, F1FRXLH & F1FR28

K-factor: 2.8 (40), 4.2 (60) & 5.6 (80)

Temp °C: 57, 68, 79, 93 & 141

Thread Size: 1/2" (15mm)

Orientation: pendent, conical concealed, pendent recessed, conventional, recessed HSW sidewall, sidewall & upright

F1FR sprinklers utilise a quick response 3mm bulb.



F1 Series

F156, F142, F1XLH & F128

K-factor: 2.8 (40), 4.2 (60) & 5.6 (80)

Temp °C: 57, 68, 79, 93, 141, 182 & 260

Thread Size: 1/2" (15mm)

Orientation: pendent, pendent recessed, conventional, sidewall, recessed HSW sidewall & upright

F1 sprinklers utilise a standard response 5mm bulb.



F1FR80 Series

F1FR80

K-factor: 8.0 (115)

Temp °C: 57, 68, 79, 93 & 141

Thread Size: 3/4" (20mm)

Orientation: pendent, pendent recessed, conventional & upright

F1FR sprinklers utilise a quick response 3mm bulb.



F1-80 Series

F1-80

K-factor: 8.0 (115)

Temp °C: 57, 68, 79, 93, 141

Thread Size: 3/4" (20mm)

Orientation: pendent, pendent recessed, conventional & upright

F1 sprinklers utilise a standard response 5mm bulb.



G5 Series

G5-80/56/42/28

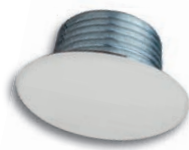
K-factor: 2.8 (40), 4.2 (60), 5.6 (80) & 8.0 (115)

Temp °C: 74 & 100

Thread Size: 1/2" (15mm) & 3/4" (20mm)

Orientation: Pendent, flat concealed

G5 series are also available as sealing concealed for dust-free environments.



G6-56 & G6-80

Horizontal Sidewall

K-factor: 5.6 (80) & 8.0 (115)

Temp °C: 74

Thread Size: 1/2" (15mm) & 3/4" (20mm)

Orientation: Horizontal Sidewall, Concealed

G6-56 & G6-80 are quick response, concealed horizontal sidewall sprinklers.



F3-56 / F3FR-56 Dry Series

Pendent and upright

K-factor: 5.6 (80)

Temp °C: 57, 68, 79, 93 & 141

Thread Size: 1" (25mm)

Orientation: pendent, conical concealed,

pendent recessed, conventional, recessed HSW sidewall, sidewall & upright

F3FR utilises a quick response 3mm bulb. F3 utilises a standard response 5mm bulb.



STORAGE

JL14 & JL17 ESFR

Suppression Mode Pendent

K-factor: 14.0 (200) & 17.0 (240)

Temp °C: 74 & 100

Thread Size: 3/4" (20mm)

Orientation: ESFR pendent

Early suppression fast response solder link sprinkler for high piled storage.



P22 ESFR

Suppression Mode Pendent

K-factor: 22.0 (320)

Temp °C: 74 & 100

Thread Size: 1" (25mm)

Orientation: ESFR pendent

Early suppression fast response solder link sprinkler for high piled storage.



P25 ESFR

Suppression Mode Pendent

K-factor: 25.0 (360)

Temp °C: 74 & 100

Thread Size: 1" (25mm)

Orientation: ESFR pendent

Designed to be shorter to allow piping to be installed further from the ceiling.



N252 Extended Coverage

CMDA & CMSA

K-factor: 25.0 (360)

Temp °C: 74 & 100

Thread Size: 1" (25mm)

Orientation: pendent

High-piled & Rack storage for extra hazard occupancies. CMDA is available recessed.



J168

Upright CMDA sprinkler

K-factor: 16.8 (240)

Temp °C: 74, 100 & 141

Thread Size: 3/4" (20mm)

Orientation: Upright

High-piled rack storage, extra hazard occupancies.



GL112

Pendent and Upright CMDA

K-factor: 11.2 (160)

Temp °C: 74 & 100

Thread Size: 3/4" (20mm)

Orientation: pendent, upright

Pendent and upright quick response fusible link. To be used high piled and rack.



GXLO

Upright and pendent CMDA

K-factor: 11.2 (160)

Temp °C: 74, 100 & 141

Thread Size: 1/2" (15mm) & 3/4" (20mm)

Orientation: pendent, upright

Standard response storage sprinkler with a large orifice for use in high challenge storage occupancies.



System Components

To complement Reliable's range of automatic fire sprinkler products they offer a comprehensive range of system components, including the RASCO control valves, CPVC pipe and fittings along with RASCOFLEX flexible hose and much more.

System Control Valves

To control the water flow to the sprinkler system, Reliable has developed an impressive range of system control valves. Their range includes non-rising stem & outside screw and yoke gate valves, check valves and butterfly valves. Together with a range of electrical equipment & strainers.



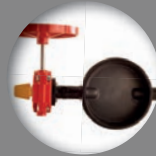
Flanged Check

Pressure: 21 BAR/
300 PSI.
ANSI & PN16.
Sizes: 50mm/2" to
300mm/12".
UL & FM approved.



British Standard Gate

Pressure: 21 BAR/
300 PSI.
Sizes: 50mm/2" to
400mm/16".
Includes tamper
switch on sizes 80mm
(3") to 300mm (12").



Butterfly

Pressure: 21 BAR/
300 PSI.
British Standard
Grooved: 50mm (2")
to 300mm (12").
British Standard
Wafer: 50mm (2") to
300mm (12").
FM & UL: Grooved:
73mm (2.5") to
200mm (8").
FM & UL Wafer:
65mm (2.5") to
200mm (8").



OS&Y Gate

Pressure: 21 BAR/
300 PSI.
Sizes Grooved: 73mm
(2.5") to 300mm (12").
Sizes Grooved x
Flanged: 65mm (2.5")
to 300mm (12").
Sizes Flanged: 65mm
(2.5") to 300mm (12").
Also available in large
size up to 600mm
(24").
Available in ANSI 150
& PN16.



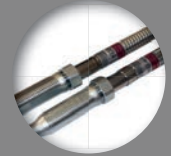
NRS Gate

Pressure: 21 BAR/
300 PSI.
Sizes: 65mm/2.5" to
300mm/12".
Also available in large
size up to 600mm
(24").
UL & FM approved.
Available in ANSI 150
& PN16.

RASCOFLEX

UL, FM, VdS & LPCB approvals

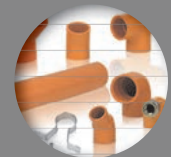
RASCOFLEX from Reliable is the flexible sprinkler hose for systems which sets new standards for simplicity. The innovative design of RASCOFLEX easily positions the sprinkler in the centre of the ceiling tile at the correct height to significantly reduce installation times. This incredibly efficient system is available in 5 different lengths, two different reducers, two inlets and two outlet nipples.



CPVC Pipe and Fittings

UL, FM & LPCB approvals

CPVC pipe offered in 3m / 10' lengths. CPVC sockets, tees, elbows, adapters, valves and cement. Range of clamps and hangers for securing pipework. Interactive software programme available to account customers for easy quotation and order placement on CPVC items.



Trim Valves

- Includes: swing check, ball valves (locking lever and standard), gate valve thread, spring check valve & Test & Drain valves in different sizes and k-factors.
- Available in different sizes and pressure ratings.



Electrical Equipment

UL, FM, LPCB & VdS approvals

Reliable are international partners of System Sensor sprinkler monitoring devices. During a fire condition, sprinkler system reliability is critical, whether it's the operation of a sprinkler head or the monitoring of the sprinkler system itself. Reliable offer supervisory switches, series water flow detectors, EPS pressure switches and explosion proof devices.



System Valves

Reliable's valve range comprises of dry pipe valves, low-pressure dry pipe valves, deluge valves and wet alarm valves, all available with a choice of trim to suit each approval and regional requirements.

E/E3 Wet Alarm Valve

UL, FM, LPCB & VdS approvals

The E/E3 valve is made expressly for all wet-pipe sprinkler systems. Available with either groove, groove x flange or flange end connections. Specific trims are available to suit individual approval and regional requirements: UL, FM, LPCB and VdS.



DDX Deluge Valve

UL, FM, LPCB & VdS approvals

The DDX valve by Reliable is a versatile valve that can be suited to nine different systems: electric deluge, wet pilot deluge, dry pilot deluge, wet pilot single interlock preaction system, dry pilot single interlock preaction system, electric single interlock preaction system, type D double interlock preaction system, type F double interlock preaction system and low pressure dry pipe system. The DDX valve is also available in 316 Stainless Steel to resist corrosion.



DDV Diaphragm Deluge Valve

UL & FM Approvals

From industrial to high risk special hazards, with integral trim ports and remote reset. Utilising a Kevlar reinforced hemispherical rubber diaphragm to hold back water when the valve is in stand-by mode, specially designed for a high level of endurance.



Preaction Systems

UL, FM, LPCB & VdS approvals

A preaction system is a sprinkler system that utilises closed sprinklers connected to a water supply through a deluge valve trimmed for preaction operation.

Non-Interlock

Fully activated by either a signal from a detection system or from loss of pneumatic pressure.

Single-Interlock

Wet, Dry or Electric actuation single interlock types.

Double-Interlock

Pneumatic/electric or electric/electric actuation double interlock types.



Test and Drain Valve



Model TD

Single handle, tri-position, ball valve

An elegant multi-function device.

The Model TD permits easier and less expensive installation, with fewer parts and lower labour costs. Sprinkler installations can be rapidly drained for routine and emergency maintenance, and periodic testing as required by design codes is facilitated with the Model TD. The option to incorporate a pressure relief valve prevents an over-pressure condition. This automatic device slowly releases water from the sprinkler system into a drain to prevent system over-pressurisation.



- Quick and easy system draining.
- Comes with integrated sight glass.
- Wide range of sizes and K-factors.
- Optional Pressure Relief Valve.



See bulletin 618 for more information



International

United Kingdom

+44 (0) 1342 316 800
rfs@reliablesprinkler.com

Europe

+49.405589818-89
europe@reliablesprinkler.com

Dubai

+971 45 47 45 19
dbsales@reliablesprinkler.com

Australia

+61 8 816 29555
ausales@reliablesprinkler.com

New Zealand

+61 8 816 29555
nzsales@reliablesprinkler.com

Singapore

+65 9859 0690
asiasales@reliablesprinkler.com

Shanghai

+86 21 54037021
asiasales@reliablesprinkler.com

For more about fire sprinklers and devices,
please contact Reliable. **Let's discuss the opportunities.**

www.reliablesprinkler.com